

One lithium-ion/lithium polymer battery protection IC

FEATURES

- High accuracy voltage detection circuit
- ✓ Overcharge detection voltage: $4.4V \pm 0.025V$;
- ✓ Overcharge release voltage: $4.2V \pm 0.05V$;
- ✓ Over-discharge detection voltage: $2.8V \pm 0.05V$;
- ✓ Over-discharge release voltage: $3.0V \pm 0.1V$;
- ✓ Discharge over current detection voltage: $0.15V \pm 0.03V$;
- ✓ Charging over current detection voltage: $-0.20V \pm 0.03V$
- ✓ Load short circuit detection voltage: $0.6-1.2V$;
- The terminal connected to the charger adopts high voltage withstand devices
- The various delay times only need to be achieved by built-in circuits (without external capacitors)
- Equipped with charging over current protection function
- Equipped with charging 0V batteries
- Equipped with sleeping function
- Low current consumption
- ✓ Under normal working conditions: Typical value = $3.0\mu A$; Maximum value = $6.0\mu A$
- ✓ In low-power state: Maximum value = $0.5\mu A$
- The range of operating temperature is $-40^{\circ}C$ to $+85^{\circ}C$

PACKAGE INFORMATION

The form of Packaging	The form of Eco-friendly	The method of Packaging	Quantity/Plate	The level of Humidity sensitivity
SOT23-6	ROHS+HF	Braid	3000	MSL=3

OVERVIEWS

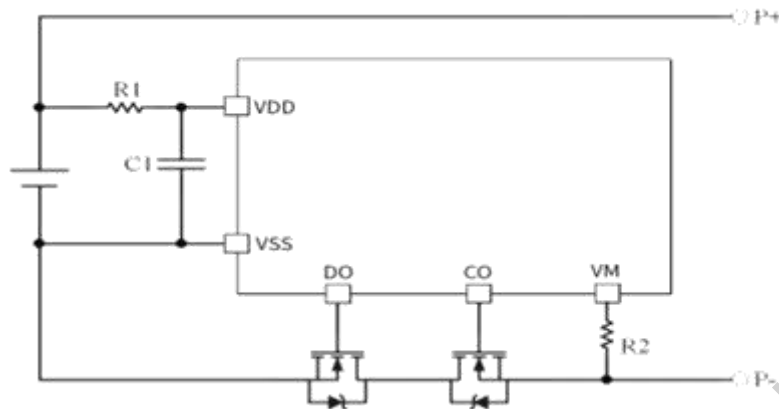
DP6801-SDG has a built-in high-precision voltage detection circuit and delay circuit, suitable for the protection IC of lithium-ion/lithium-polymer rechargeable batteries.

DP6801-SDG is most suitable for overcharging, discharging, and over current protection of one lithium-ion/lithium-polymer rechargeable battery pack.

APPLICATIONS

- Lithium-ion rechargeable battery pack
- Lithium polymer rechargeable battery pack

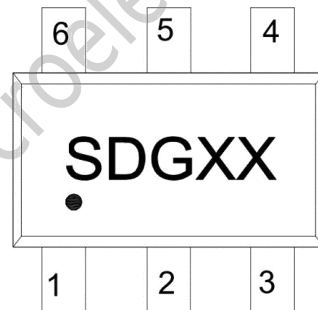
APPLICATION SCHEMATIC DIAGRAM



Device identification	Typical values	Parameter range	Units
R1	100	100 ~ 470	Ω
R2	2	0.47 ~ 2	k Ω
C1	0.1	0.1 ~ 1	μ F

PRODUCT DESCRIPTION

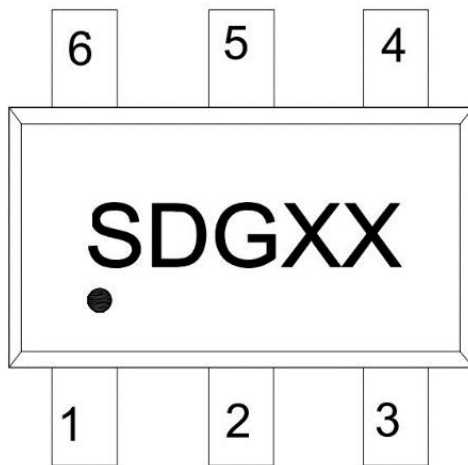
➤ Pin Arrangement



➤ Pin Function

Pin symbol	Pin name	Description
1	OD	Discharge control FET threshold connection pins.
2	VM	Current detection input pin, and charger detection.
3	OC	Charge control FET threshold connection pin.
4	NC	Not connected.
5	VDD	Positive power input.
6	VSS	Negative power input.

➤ Product Marking

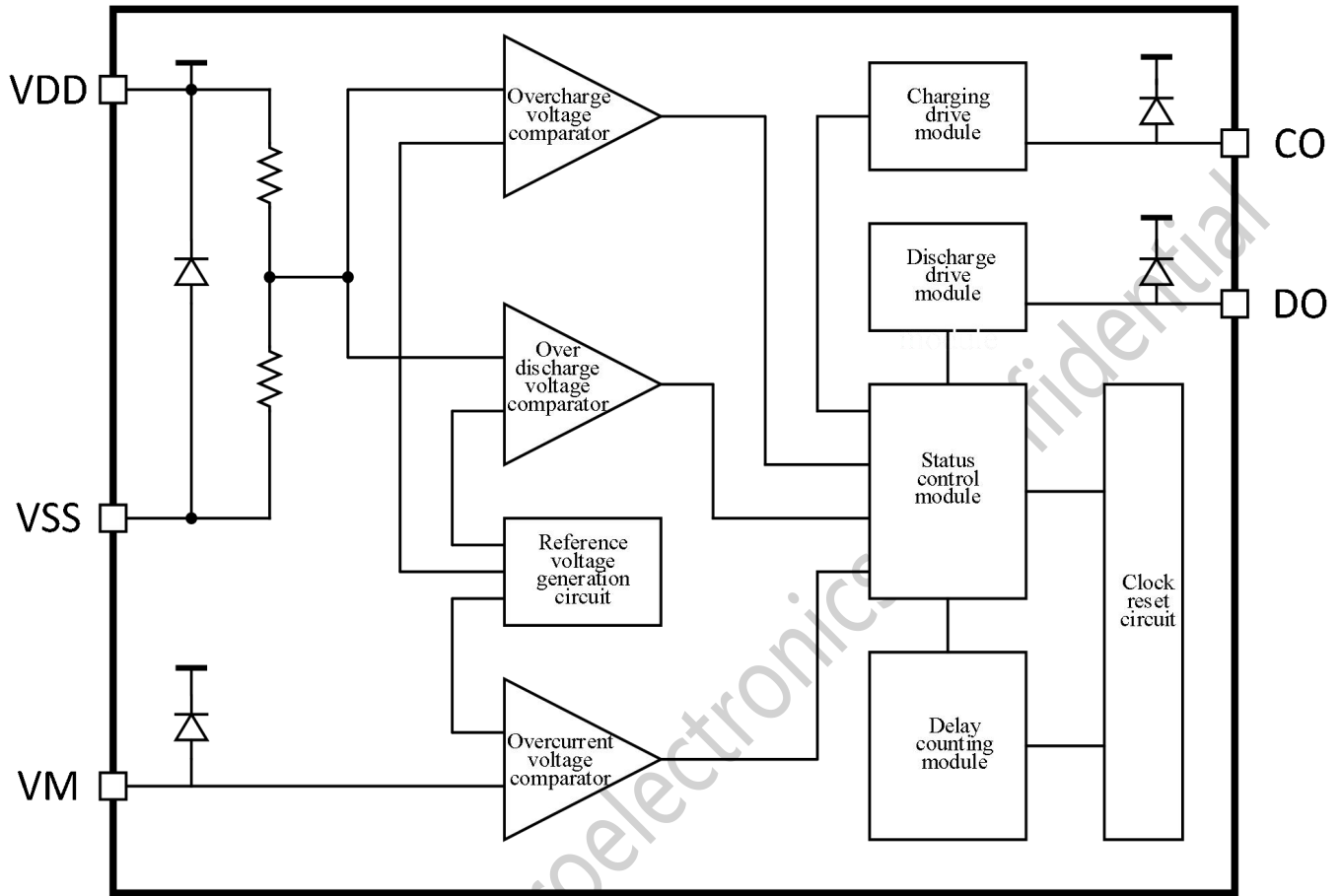


- SDG represents the product model;
- The first "X" represents the last digit of the year, for example 2023, which is 3;
- The second "X" represents the week, the first 26 weeks are represented by uppercase letters, and the last 26 weeks are represented by lowercase letters.

➤ Absolute Maximum Ratings

Parameter	Symbol	Parameter range	Unit
Supply voltage	VDD	VSS-0.3~VSS+10	V
OC output pin voltage	V _{OC}	VDD-25~VDD+0.3	V
OD output pin voltage	V _{OD}	VSS-0.3~VDD+0.3	V
VM input pin voltage	V _{VM}	VDD-25~VDD+0.3	V
Operation temperature	T _{opr}	-40~+85	°C
Storage temperature	T _{stg}	-40~+125	°C
Permissible power consumption	P _D	250	mW

FUNCTION BLOCK DIAGRAM



ELECTRICAL PARAMETERS (Unless we otherwise specified, $T_{amp}=25^{\circ}C$)

Symbol	Parameter	Test conditions	Minimum	Typical	Maximum	Unit
Working voltage						
VDD-VSS working voltage	$V_{DD}-V_{SS}$	--	1.5	--	6	V
Consumption current						
Working current	I_{DD}	$V_{DD}=3.7V, V_m=0V$	--	3.0	6.0	μA
Dormant current	I_{OD}	$V_{DD}=2.0V$	--	0.2	0.5	μA
Detection voltage						
Overcharge detection voltage	V_{CU}	--	4.375	4.40	4.425	V
Overcharge release voltage	V_{CR}	--	4.15	4.20	4.25	V
Over-discharge detection voltage	V_{DL}	--	2.75	2.80	2.85	V
Over-discharge release voltage	V_{DR}	--	2.95	3.00	3.05	V
Discharge overcurrent detection voltage	V_{DIOV}	$V_{DD}=3.6V$	135	150	165	mV
Charging overcurrent detection voltage	V_{CIOV}	$V_{DD}=3.6V$	-230	-200	-170	mV
Load short circuit detection voltage	V_{SHORT}	$V_{DD}=3.6V$	0.6	0.9	1.2	V
0V charging allowable voltage threshold	V_{0V_CH}	Charger voltage	1.2	--	--	V
Delay time						
Overcharge detection delay time	T_{cu}	$V_{DD}=3.6V\sim 4.4V$	1000	1300	1600	ms
Delay time for over discharge detection	T_{DL}	$V_{DD}=2.0V\sim 3.6V$	115	145	175	ms
Delay time for discharge overcurrent detection	T_{DIOV}	$V_{DD}=3.6V$	9	12	15	ms
Charging overcurrent detection delay time	T_{CIOV}	$V_{DD}=3.6V$	6	15	20	ms
Load short circuit detection delay time	T_{SHORT}	$V_{DD}=3.6V$	200	300	500	μs

PRODUCT APPLICATION INFORMATION

- **Normal working state**

The function of this IC is to control the charging and discharging by monitoring the battery voltage between VDD-VSS, as well as the voltage between VM-VSS. When the battery voltage is above the over-discharge detection voltage (V_{DL}) and below the overcharge detection voltage (V_{CU}), and the voltage of the VM terminal is above the charging over current detection voltage (V_{CIOV}) and below the discharging over current detection voltage (V_{DIOV}), both the charging control FET and the discharging control FET are turned on. At this point, free charging and discharging can be carried out. This state is called a normal state.

Note: When connecting the battery cell for the first time, there may be a possibility that it cannot discharge. At this time, short circuiting the VM terminal and VSS terminal, or connecting the charger, and you can restore normal working state.

- **Overcharge state**

When the battery voltage in a normal state exceeds the overcharging detection voltage (V_{CU}) during charging and remains above the overcharging detection delay time (T_{CU}), turn off the charging control FET and stop charging. This state is called overcharge state.

The discharge of the overcharge state is divided into the following two methods:

1. If the voltage of the VM terminal is lower than the discharge overcurrent detection voltage (V_{DIOV}), and the battery voltage drops below the overcharging release voltage (V_{CR}), the overcharging state can be relieved.
2. If the voltage of the VM terminal is higher

than the discharge overcurrent detection voltage (V_{DIOV}), and the battery voltage drops below the overcharging detection voltage (V_{CU}), the overcharging state can be relieved.

Note:

1. Batteries that are above the overcharge detection voltage (V_{CU}), even if a larger load is connected, cannot cause the battery voltage to drop below the overcharge detection voltage (V_{CU}). Discharge overcurrent detection and load short circuit detection are not effective. But in fact, due to the internal impedance of the battery, when a large load is connected and generates a large current, the battery voltage will quickly decrease below the overcharging detection voltage (V_{CU}). Discharge overcurrent detection and load short circuit detection will return to normal working conditions.

2. For batteries above the overcharge detection voltage (V_{CU}), disconnect the charger, and the battery is in an unloaded or loaded state. The VM can rise above the discharge overcurrent detection voltage (V_{DIOV}) through internal circuits or external loads, and the battery voltage can be reduced below the overcharge detection voltage (V_{CU}) to release the overcharge state.

- **Over discharge state**

When the battery voltage in a normal state is below the over discharge detection voltage (V_{DL}) during discharge and remains in this state above the over discharge detection delay time (TDL), the discharge control FET will be turned off to stop discharge. This state is called an over discharge state.

This chip has a sleep function. When the battery is in an over discharge state, the sleep function will start working and the chip's current consumption will be reduced to sleep current.

There are two methods for releasing the sleep function (over discharge state):

1. Connect the charger, and if the voltage of the VM terminal is lower than the charging overcurrent detection voltage (V_{CIOV}), the over discharge state will be released when the battery voltage is higher than the over discharge detection voltage (V_{DL}), and the normal working state will be restored.
2. Connect the charger, and if the voltage of the VM terminal is higher than the charging overcurrent detection voltage (V_{CIOV}), when the battery voltage is higher than the over discharge release voltage (V_{DR}), the over discharge state will be released and the normal working state will be restored.

Note:

1. This chip has a sleep function. After the chip is assembled with the battery cell, it may be mistakenly triggered to enter the sleep state due to external environmental influences. Once the chip enters the sleep state, it can be restored to the normal state by connecting a charger; If you mind this impact, we suggest that the customer change to a product with over discharge and self-recovery to avoid such issues.

2. For batteries in a dormant (over discharge) state, if the charger is not connected, the battery will remain in an over discharge (dormant) state, even if the VDD voltage is above the overcharge detection voltage (V_{CU}).

- **Discharge over current status and load short circuit status**

In a normal discharge state of a battery, the voltage of the VM terminal increases as the discharge current increases. When the detection voltage of the VM terminal rises above the discharge overcurrent detection voltage (V_{DIOV}) and the duration of this state exceeds the discharge overcurrent detection delay time (T_{DIOV}), the discharge control FET will be turned off, and this state is called the discharge overcurrent state. Under normal discharge conditions, the voltage of the VM terminal increases as the discharge current increases. When the VM terminal detection voltage rises above the load short circuit detection voltage (V_{SHORT}) and the duration of this state exceeds the short circuit detection delay time (T_{SHORT}), the discharge control FET will be turned off, and this state is called the load short circuit state.

- **Release conditions for discharge overcurrent state and load short-circuit state:**

When the protection circuit triggers a discharge overcurrent/load short-circuit state, reducing the voltage of the VM terminal to the voltage of the VSS terminal can relieve the discharge overcurrent state or load short-circuit state. Connect the charger so that the voltage of the VM terminal is below the voltage of the VSS terminal, and it can also relieve the discharge overcurrent state or load short circuit state.

- **Charging overcurrent status**

In the normal charging state of the battery, the voltage at the VM terminal decreases as the charging current increases. The VM pin detects that the voltage decreases below the charging overcurrent detection voltage (V_{CIOV}), and the

delay is greater than the charging overcurrent detection delay time (T_{CIOV}). The charging control FET will be turned off, and this state is called the charging overcurrent state.

Charging overcurrent release conditions:

When the protection circuit remains in the charging overcurrent state, disconnecting the connection to the charger will restore the VM terminal to the VSS terminal voltage and also release the charging overcurrent state.

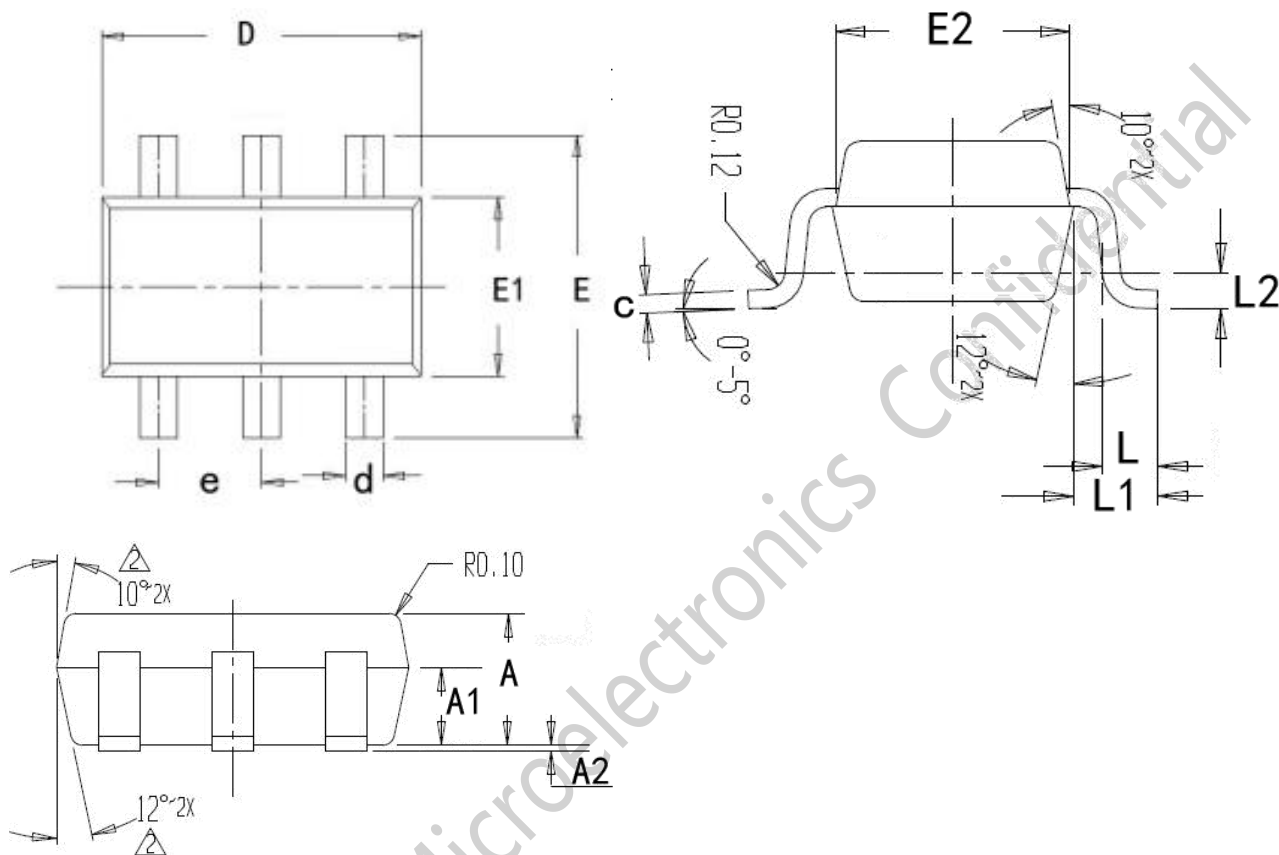
● 0V battery charging

The function of charging when the battery voltage drops to 0 V due to self-discharge. If a charger is used to charge the battery in the "0V" state, and the voltage between the VDD end and the VM end of this IC circuit is greater than the 0V charging allowable threshold (V_{OV_CH}), the charging control end OC will be connected to the VDD end. If the voltage can make the external

charging control FET conductive, the internal diode of the discharge control FET can form a charging circuit, causing the battery voltage to increase; When the battery voltage rises to a level that causes the VDD terminal voltage to exceed the over discharge detection voltage (V_{DL}), it will return to the normal state. At the same time, the discharge control terminal OD outputs a high level, making the external discharge control FET in a conductive state.

Note:

For the charging overcurrent detection function, the function of charging 0 V batteries has priority. Therefore, products that are "allowed" to charge 0 V batteries will be forcibly charged when the battery voltage is lower than the over discharge detection voltage (V_{DL}), and cannot perform charging overcurrent detection work.

PACKAGE (unit: mm)
SOT23-6


Symbol	Min	Nom	Max
A	1.050	1.100	1.150
A1	0.625	0.650	0.675
A2	0.010	0.050	0.090
c	0.047	0.127	0.207
D	2.900	2.950	3.000
d	0.325	0.350	0.375
E	2.720	2.800	2.880
E1	1.600	1.650	1.700
E2	1.550	1.600	1.650
e	0.925	0.95	0.975
L	0.300	0.380	0.460
L1		0.599REF	
L2		0.250BSC	

OFFICIAL ANNOUNCEMENT

Division I will ensure the accuracy and reliability of the product specification document, but we reserve the right to independently modify the content of the specification document without prior notice to the customer. Before placing an order, customers should contact us to obtain the latest relevant information and verify that this information is complete and up-to-date. All product sales are subject to the sales terms and conditions provided by our company at the time of order confirmation.

Division I will periodically update the content of this document. Actual product parameters may vary due to differences in models or other factors. This document does not serve as any express or implied guarantee or authorization.

The product specification does not include any authorization for the intellectual property owned by our company or any third party. With respect to the information contained in this product specification, we make no explicit or implied warranties, including but not limited to the accuracy of the specification, its fitness for commercial use, suitability for specific purposes, or non-infringement of our company's or any third party's intellectual property. We also do not assume any responsibility for any incidental or consequential losses related to this specification document and its use.

We do not assume any obligations regarding application assistance or customer product design. Customers are responsible for their own use of our company's products and applications. In order to minimize risks associated with customer products and applications, customers should provide thorough design and operational safety validation.

The reproduction, transmission or use of this document or its contents is not permitted without express written authority. Once discovered, the company will pursue its legal responsibility according to law and compensate for all losses caused to the company.

Please note that the product is used within the conditions described in this document, paying particular attention to the absolute maximum rating, operating voltage range, and electrical characteristics. The Company shall not be liable for any damage caused by malfunctions, accidents, etc. caused by the use of the product outside the conditions stated in this document.

Division I has been committed to improving the quality and reliability of products, but all semiconductor products have a certain probability of failure, which may lead to some personal accidents, fire accidents, etc. When designing products, pay full attention to redundancy design and adopt safety indicators, so as to avoid accidents.

When using our chips to produce products, Division I shall not be liable for any patent dispute arising from the use of the chip in the product, the specification of the product, or the country of import, etc., in the event of a patent dispute over the products including the chip.